



Burton Communal Garden

Hosting a variety of activities to build health, wellbeing, and a sustainable environment.



Activities September to December 2024

Gardening - activities based around plants and nature

Connect with other gardeners and share the joy of working with plants

Friends of Nature over 50's program

Casual friendly group based inside working on a variety of projects based on biodiversity

Tuesdays, 9.30am to 11.30am

Pottering in the Garden over 50's program

Relaxed morning in the garden

Tuesday, Wednesday, Thursday, 9am to 12noon

Gardener's Gathering open to all ages

Meet other local home food growers to share your experiences and learn from each other

Wednesday, 23 October, 1pm to 2.30pm

Summer veggies growing

Wednesday, 27 November, 1pm to 2.30pm

Summer veggies growing

Food Gardener Tips Talk open to all ages

Informal sessions with our inhouse garden staff

Wednesday, 18 September, 1pm to 2.30pm

Topic: Growing Tomatoes Sign up for the tomato growing challenge

Wednesday, 16 October, 1pm to 2.30pm

Topic: Growing Citrus

Wednesday, 20 November, 1pm to 2.30pm

Topic: Successive Summer Veggie Crops

Seeds 'n' Seedlings over 50's program

Session based on propagating, saving seeds and grow seedlings. Come to learn or enjoy the company

Wednesday, 9.30am to 11.30am

Special Events and Sessions open to all ages

Making Native Bee hHtels

Thursdays in October 10am to 12 noon

Tomato Growing Challenge Meet-up

Wednesday, 9 Oct, 13 Nov, 11 Dec, 1pm - 2.30pm

Natural Trail in the Garden

Tues - Thurs, 1,2,3, and 8, 9,10 Oct, 9am - 3pm

Bugs at Burton Photographic Exhibition

Tues - Thurs, November, 9am - 3pm

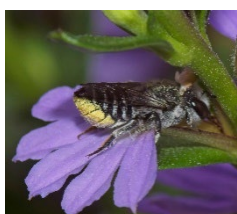
Creative Craft over Afternoon Tea

Thursday November 7, 1pm - 2.30pm

Growing Food - course 4 weeks

Thursday October 10 - 31, 11am - 12.15pm

Thursday November 7 - 28, 11am - 12.15pm



Information and enquiries contact Shannan on 0401 984 785 or sdavis@salisbury.sa.gov.au
Cost \$4/\$3 each person for each attendance

Bookings required **8487 1820 (Burton Community Hub)**



Burton Communal Garden

Hosting a variety of activities to build health, wellbeing, and a sustainable environment.



Seniors Programs in Salisbury

Adults over 50 are welcome at the Burton Communal Garden's Over 50's Programs.

Regular participants are encouraged to become members, giving access to groups, activities, and events at other centres like Jack Young Centre in Salisbury, Para Hills Seniors Centre, and Pine Lakes Centre in Parafield Gardens. Enjoy various programs, events, and meals.

For membership forms, please see Shannan, our Garden coordinator. Contact 0401 984 785 or sdavis@salisbury.sa.gov.au

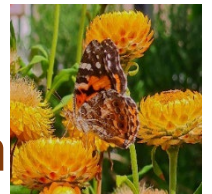


Open to everyone

You are welcome to join us Tuesdays to Thursdays 9am to 1pm to

walk through the garden

Do the Nature trail with your children



Pick up a sheet near the seed library

Participate in the seed library



Join the Wednesday afternoon Gardener talks and experience shares

Refer to other page for details

For other Garden activities run by the Burton Community Hub, visit 380 Waterloo Corner Road, Burton or contact 8487 1820