



WELCOME TO SALISBURY

Have *Your* Say

DRAFT CITY PLAN 2040

Easy Guide Version

ONLY FOR CONSULTATION





Have Your Say

All councils have a strategic plan, to help guide their work and decision making.

The City of Salisbury's strategic plan is called the City Plan.

We would like your feedback on this plan, in particular the Critical Actions, in Pages 5-8 of this document.

Please provide your feedback at:
www.salisbury.sa.gov.au/cityplan2040

Public consultation on the document runs from 1 to 26 May 2024.

This is an Easy Guide version of the draft City Plan. It is a short and simple summary of the Draft City Plan. If you wish to read the full Draft City Plan, please visit the website above.

Our city

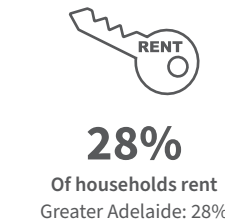
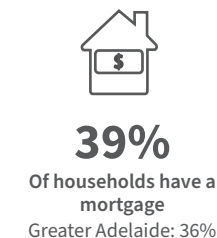
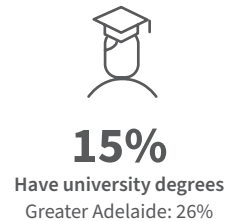
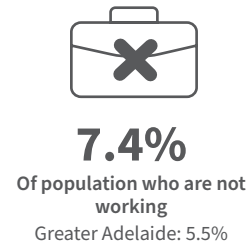
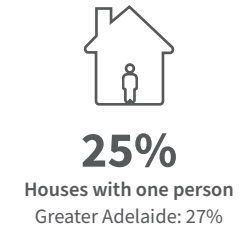
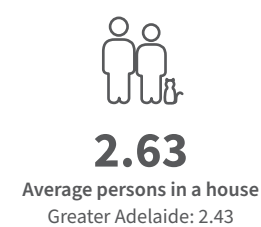
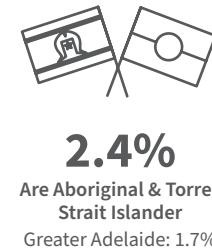
Our city

The City of Salisbury is home to 148,000 people. It is one of the largest councils in metropolitan Adelaide. More and more people are choosing to live in the City of Salisbury because it is attractive, affordable and has jobs.

We are a growing city with many challenges and opportunities, such as:

- We need more houses for our growing population, that is affordable and attractive to live in
- We need to cool our city more, especially as our climate is getting warmer
- We need our coastline, roads, buildings and other assets to be stronger, especially in changing climate
- We need to be more prepared for changes and uptake in commercial, manufacturing and defence industries, especially to be more environmentally friendly
- We need to be more prepared for growth in residential and employment development opportunities
- We need to help our community access what they need, especially in and around city centres and activity centres, such as jobs, services, shops and schools
- We need to be more prepared for an increasingly diverse population, and improve our relationship with the community.

The Council plays an important role in preparing for these challenges, to make our city a wonderful place to live, work and play.



Introduction to the City Plan

What is the City Plan?

The City Plan is the City of Salisbury’s strategic plan.

A strategic plan is a document that guides our work and decision making. Under the law, all councils need to have a strategic plan.

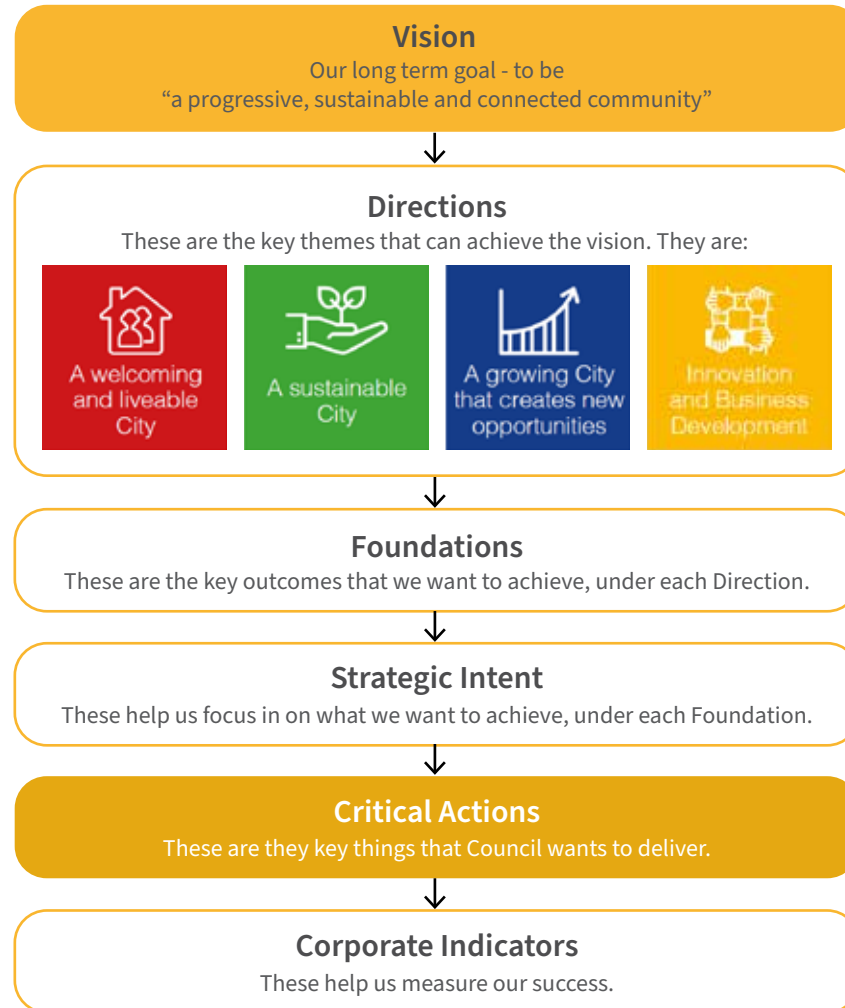
Our vision is to be:

“A progressive, sustainable and connected community”.

The vision is a long-term goal of what we want for our city and community.

The City Plan lays out the ways that we can achieve our vision. It also lets us work together with the State Government, other councils and other organisations to achieve good outcomes for the community.

What is the structure of the City Plan?



In this document, you will find a list of Critical Actions. These are the key things that we want to focus on delivering over the next few years.

They are categorised into four Directions, which are key themes. They are:

1. **A welcoming and liveable city**
2. **A sustainable city**
3. **A growing city that creates new opportunities**
4. **Innovation and Business Development.**

The first three themes are the areas that we want to do to achieve our vision. The fourth theme looks at how we can improve how we work and our services to the community.

We would like your feedback on the Critical Actions, which are on the next few pages.

Critical Actions *[These are draft only for consultation]*



We want to be a welcoming and liveable city, by...

Having different types of houses that meets the needs of our community.



CRITICAL ACTIONS:

1. Explore ways to support those who need financial help.
2. Explore ways to reduce cost of living pressures.
3. Promote more housing in the city that are affordable and different.
4. Deliver more housing in the city.

Supporting our physical and mental health and wellbeing.



CRITICAL ACTIONS:

1. Deliver programs and initiatives that improve health and wellbeing.
2. Promote the use of the [Salisbury Aquatic Centre](#) and our recreation centres.
3. Support our community, recreation and sporting groups.
4. Plan for the types of facilities we need in the future.

Welcoming people of all ages, background and abilities, and recognising First Nations peoples.



CRITICAL ACTIONS:

1. Connect more with our youth.
2. Connect and work with our diverse community.
3. Explore the development of a large arts or cultural event.
4. Build relationships with First Nations peoples.

Making our city attractive and safe.



CRITICAL ACTIONS:

1. Improve the safety of our city.
2. Deliver our CCTV program to increase safety.
3. Make the roads around schools safer.
4. Improve the quality of landscaping across the city.

Critical Actions *[These are draft only for consultation]*



We want to be a sustainable city, by...

Taking care of our environment.



CRITICAL ACTIONS:

1. Cool and green our city.
2. Protect our mangroves and coastline.
3. Protect our biodiversity* in our city.

** Biodiversity means the plants, animals and ecosystems that we live around. They can include things like trees, bird life, reserves and our creeks.*

Reducing the amount of carbon we release*.



CRITICAL ACTIONS:

1. Plan to reduce how much carbon we release into the environment.
2. Support our city's businesses and industries to reduce their carbon emissions.

** Too much carbon in our environment can lead to global warming. Carbon can be produced through things like the burning of petrol in cars and producing iron and steel.*

Being tougher against climate change*.



CRITICAL ACTIONS:

1. Look at ways that our city's infrastructure can be tougher against climate change*.
2. Make a plan to work out how Council can address climate change* impacts.
3. Promote more environmentally friendly houses.

** Examples of climate change are increasing number of heat waves and rising sea levels.*

Managing our waste and water responsibly.



CRITICAL ACTIONS:

For waste:

1. Look at ways to deal with waste differently.
2. Improve how we manage our waste in Council.
3. Promote ways to reduce, reuse and re-purpose waste.

For water:

4. Capture, clean and re-use stormwater in our city.

Critical Actions *[These are draft only for consultation]*



We want to be a growing city that creates new opportunities, by...

Supporting our city's businesses to be successful.



CRITICAL ACTIONS:

1. Support our industries and entrepreneurs*, and connect them to other industry areas.
2. Build our businesses' skills and capabilities.
3. Increase training and job development skills for our community.
4. Support our youth to be entrepreneurs*.

** An entrepreneur is someone who wants to start up a new business.*

Making our city a place to work, study, play and invest.



CRITICAL ACTIONS:

1. Attract visitors in the city through events.

Planning and supporting growth in our city.



CRITICAL ACTIONS:

1. Upgrade our stormwater and road network in areas that are growing.
2. Work with the State Government on developing [Dry Creek](#).
3. Look at ways to improve east-west traffic and in areas that are growing.
4. Improve traffic and transport movements across the city.
5. Support growth through land rezonings.

Making our city centres active and prosper.



CRITICAL ACTIONS:

1. Make Salisbury City Centre attractive and active.
2. Make Ingle Farm activity centre and surrounds attractive and active.

Critical Actions *[These are draft only for consultation]*



We want to improve how we work and our services to the community through supporting **Innovation and Business Development**, by...

Delivering effective and efficient services.



CRITICAL ACTIONS:

1. Improve our service delivery internally and externally.
2. Carry out ways to improve our digital services.
3. Look at ways to get external funding and grants.
4. Plan ways for Council to advocate to the upcoming Federal and State Government elections.
5. Making sure our infrastructure and assets are well planned.
6. Look at different ways to fund our projects.
7. Look at different ways to deliver services in our community centres and libraries.

Making our council a great place to work.



CRITICAL ACTIONS:

1. Give opportunities for staff development and communication.

Helping our community to be engaged with council.



CRITICAL ACTIONS:

1. Plan ways to improve community consultation.

Making sure our commercial operations provide value for the community.



CRITICAL ACTIONS:

1. Better plan for recycled water management through [Salisbury Water](#).
2. Better plan for waste management through [NAWMA](#).

Providing high quality outcomes to the community.



CRITICAL ACTIONS:

1. Plan ways to improve communication to the community.
2. Improve our Council's cybersecurity technology.
3. Plan ways to improve experiences when using Council services.



CITY OF SALISBURY

(08) 8406 8222
34 Church Street
Salisbury SA 5108
city@salisbury.sa.gov.au

Please provide your feedback at:
www.salisbury.sa.gov.au/cityplan2040