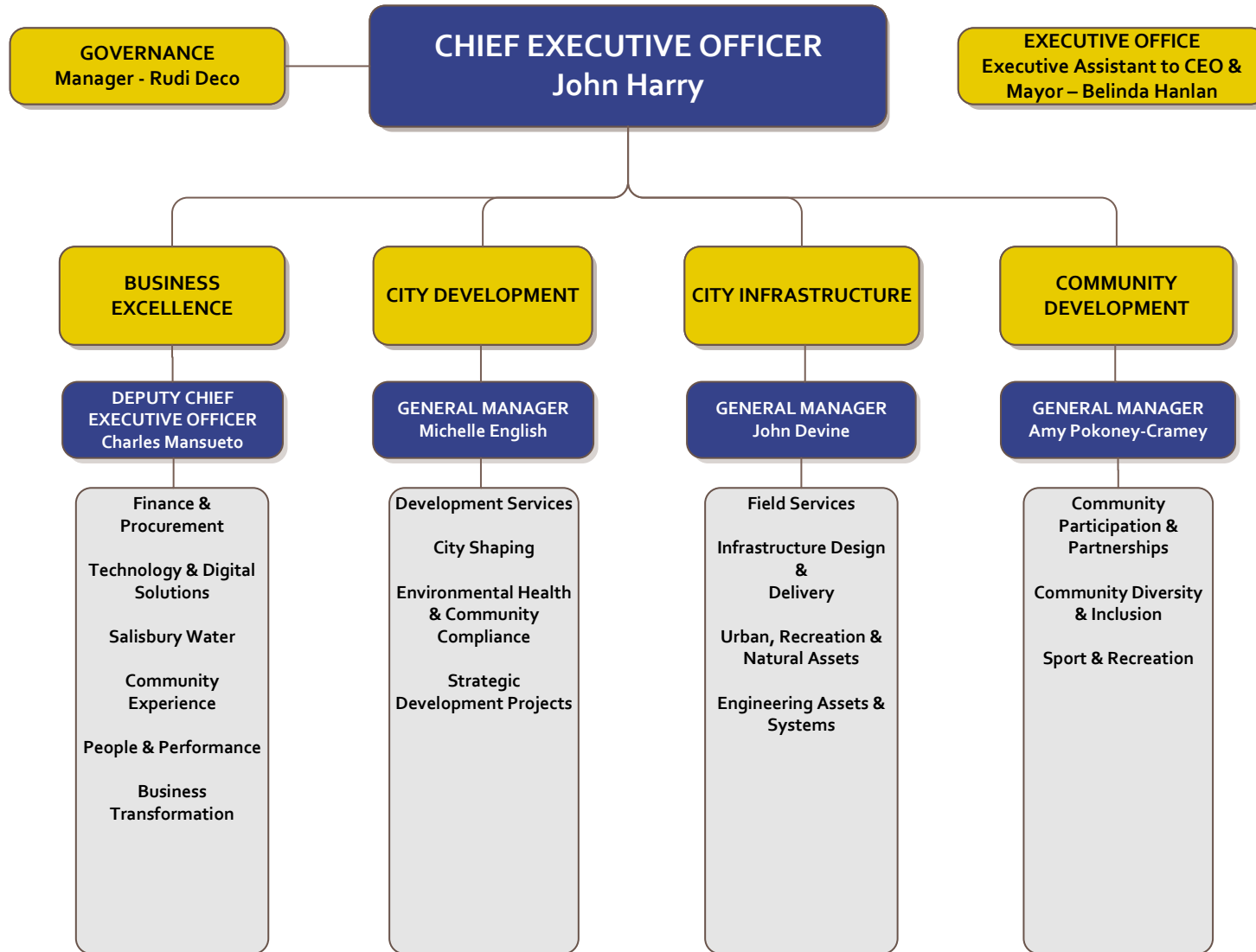




# ORGANISATION STRUCTURE





**BUSINESS EXCELLENCE  
DEPARTMENT**

**DEPUTY CHIEF EXECUTIVE  
OFFICER**  
Charles Mansueto

**BUSINESS  
TRANSFORMATION**

**MANAGER**  
Jayne Emerson

Business Transformation

**COMMUNITY  
EXPERIENCE**

**MANAGER**  
Chelsea Kroepsch

Corporate Communications  
Community Marketing  
Media Relations &  
Communications  
Community Engagement  
Publications

**FINANCE &  
PROCUREMENT**

**MANAGER**  
Kate George

Rates  
Policy & Collections  
Budget & Management  
Accounting  
Grants & Subsidy  
Management  
Treasury  
Asset & Project Accounting  
Financial Accounting &  
Reporting  
Debtors  
Accounts Payable  
Tendering & Contract  
Management  
Contract & Procurement  
Policies  
Purchasing Practices &  
Policy  
Delegations

**PEOPLE &  
PERFORMANCE**

**MANAGER**  
Kia Logan

Human Resource Services  
Employment & Industrial  
Relations  
Learning & Development  
Safety & Wellbeing  
Organisational  
Development  
Payroll

**SALISBURY WATER**

**MANAGER**  
Bruce Naumann

Salisbury Water Business  
Unit

**TECHNOLOGY &  
DIGITAL SOLUTIONS**

**MANAGER**  
Acting - Michelle Collins

Information Strategy  
Planning and Business  
Engagement  
Technology Services  
Service Desk  
Information Management  
Continuous Improvement



**CITY DEVELOPMENT  
DEPARTMENT**

**GENERAL MANAGER  
Michelle English**

**PERSONAL & ADMIN  
SUPPORT**  
PA to GM - Michelle Whibley

**CITY SHAPING**

**MANAGER  
Leandro Lopez Digon**

- Economic Development
- Business Advice and Events
- Investment Attraction
- City Plan
- Development Plan Amendments
- Economic and Urban Policy
- Green Industries
- Business Engagement (incl. international)
- Climate Change Adaptation
- Strategic Master Planning

**DEVELOPMENT  
SERVICES**

**MANAGER  
Chris Zafiroopoulos**

- Development Plan Assessment
- Building Rules Assessment
- Corporate Signs
- Heritage Assessment
- Dev't Inspections & Compliance
- Assessment of Land Division Proposals
- Dev't Engineering Coordination
- Admin & Support Services
- Private Certification Services

**ENVIRONMENTAL  
HEALTH &  
COMMUNITY  
COMPLIANCE**

**MANAGER  
John Darzanos**

- Public & Environmental Health
- Food Safety
- Inspectorate
- Dog & Cat Management
- Local Government By-Law Enforcement
- Parking Control

**STRATEGIC  
DEVELOPMENT  
PROJECTS**

**MANAGER  
Sharee Klein**

- Strategic Property Development Projects
- Development Projects Feasibility
- Property Services



# CITY INFRASTRUCTURE DEPARTMENT

**GENERAL MANAGER**  
John Devine

**PERSONAL & ADMIN SUPPORT**  
PA to GM & Team Leader  
City Infrastructure Administration-  
Heather Prasad

## FIELD SERVICES

**MANAGER**  
Mark Purdie

Road, Drainage, Footpath, Verge & Civil Maintenance  
Litter Collection & Graffiti Removal  
Signage & Line Marking  
Sportsgrounds, Turf and Irrigation Maintenance  
Playground, Reserve, Open Space, Wetlands & Biodiversity Maintenance  
Feature Landscape & City Centre Maintenance  
Pest & Weed Control  
Ornamental Lakes Maintenance  
Tree Planting & Maintenance  
Cemetery Maintenance  
Security  
Workshop, Fleet & Stores  
Building Maintenance  
Operational Contract Management

## INFRASTRUCTURE DESIGN & DELIVERY

**MANAGER**  
Jarred Collins

Civil Design (Roads, Traffic, Drainage, Building & Recreation)  
Road Reseal Contract Delivery  
Building Project Delivery  
Recreation Project Delivery  
Capital Works Program  
Capital Works Contract Management

## URBAN, RECREATION & NATURAL ASSETS

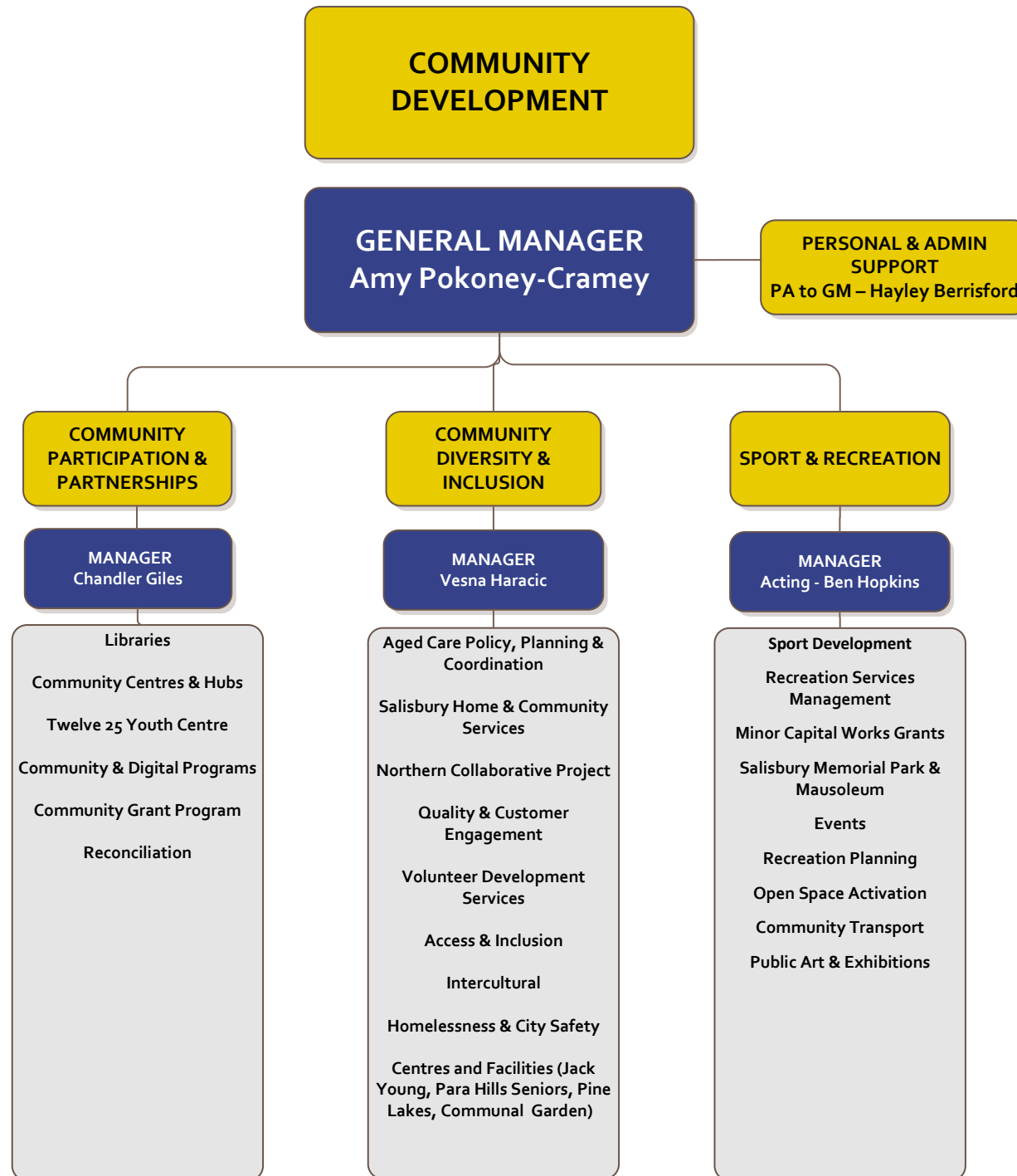
**MANAGER**  
Jon Foong

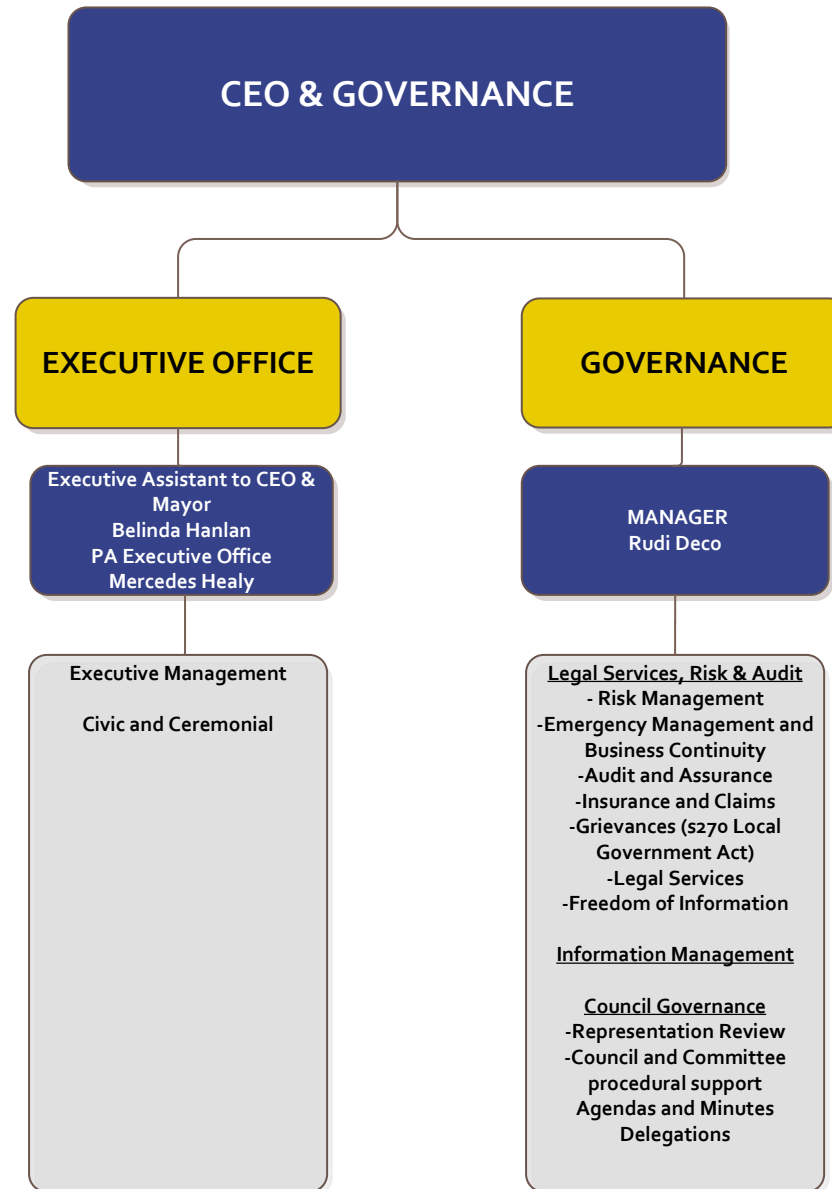
Capital Works Program Development  
Asset Management Planning (Open Space, Recreation, Building & Natural Assets)  
Street Tree Program Management  
Footpath and Pathway Programs  
Biodiversity & Environmental Management Programs  
Waste Contract Management  
Facilities Management  
Community and Sports Club Leases

## ENGINEERING ASSETS & SYSTEMS

**MANAGER**  
Chris Haskas

Strategic Asset Management  
Capital Works Program Development  
Asset Management Planning (Transport & Civil Engineering Assets)  
Infrastructure Planning/ Strategies  
Civil Structures  
Water Bodies, Drainage & Stormwater Management & Planning  
Coastal Structures  
Asset Data Management, Analysis & Reporting







Executive Assistant to CEO & Mayor –  
Belinda Hanlan  
PA Executive Office – Mercedes Healy



**CHIEF EXECUTIVE OFFICER**  
**John Harry**



**GOVERNANCE**  
Manager: Rudi Deco



**BUSINESS EXCELLENCE**  
Deputy Chief Executive  
Officer  
Charles Mansueto



**CITY DEVELOPMENT**  
General Manager  
Michelle English



**CITY INFRASTRUCTURE**  
General Manager  
John Devine



**COMMUNITY  
DEVELOPMENT**  
General Manager  
Amy Pokoney-Cramey



**BUSINESS TRANSFORMATION**  
Director: Jayne Emerson



**PERSONAL & ADMIN  
SUPPORT**  
PA to GM - Michelle Whibley



**PERSONAL & ADMIN  
SUPPORT**  
PA to GM & Team Leader City  
Infrastructure Administration-  
Heather Prasad



**PERSONAL & ADMIN  
SUPPORT**  
PA to GM – Hayley Berrisford



**COMMUNITY EXPERIENCE**  
Manager: Chelsea Kroepsch



**CITY SHAPING**  
Manager:  
Leandro Lopez Digon



**FIELD SERVICES**  
Manager: Mark Purdie



**COMMUNITY PARTICIPATION &  
PARTNERSHIPS**  
Manager: Chandler Giles



**FINANCE & PROCUREMENT**  
Manager: Kate George



**DEVELOPMENT SERVICES**  
Manager: Chris Zafirooulos



**INFRASTRUCTURE DESIGN &  
DELIVERY**  
Manager: Jarred Collins



**COMMUNITY DIVERSITY &  
INCLUSION**  
Manager: Vesna Haracic



**PEOPLE & PERFORMANCE**  
Manager: Kia Logan



**ENVIRONMENTAL HEALTH &  
COMMUNITY COMPLIANCE**  
Manager: John Darzanos



**URBAN, RECREATION &  
NATURAL ASSETS**  
Manager: Jonathan Foong



**SPORT & RECREATION**  
Acting Manager: Ben Hopkins



**SALISBURY WATER**  
Manager: Bruce Naumann



**STRATEGIC DEVELOPMENT  
PROJECTS**  
Manager: Sharee Klein



**ENGINEERING ASSETS &  
SYSTEMS**  
Manager: Chris Haskas



**TECHNOLOGY & DIGITAL  
SOLUTIONS**  
Acting Manager: Michelle Collins