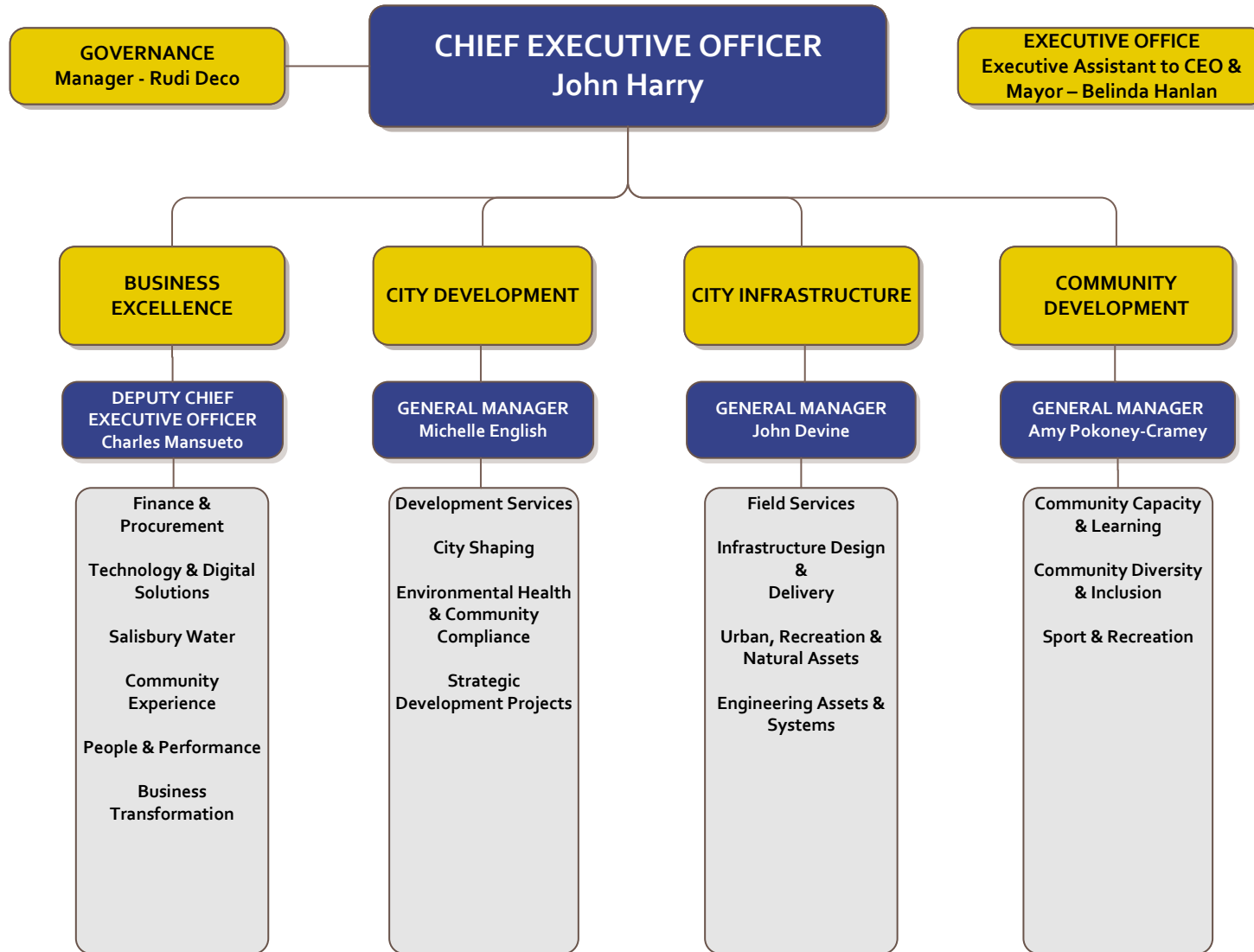




ORGANISATION STRUCTURE





**BUSINESS EXCELLENCE
DEPARTMENT**

**DEPUTY CHIEF EXECUTIVE
OFFICER
Charles Mansueto**

**BUSINESS
TRANSFORMATION**

**MANAGER
Jayne Emerson**

Business Transformation

**COMMUNITY
EXPERIENCE**

**MANAGER
Chelsea Kroepsch**

Corporate Communications
Community Marketing
Media Relations & Communications
Community Engagement
Publications

**FINANCE &
PROCUREMENT**

**MANAGER
Kate George**

Rates
Policy & Collections
Budget & Management
Accounting
Grants & Subsidy
Management
Treasury
Asset & Project Accounting
Financial Accounting & Reporting
Debtors
Accounts Payable
Tendering & Contract
Management
Contract & Procurement
Policies
Purchasing Practices & Policy
Delegations

**PEOPLE &
PERFORMANCE**

**MANAGER
Kia Logan**

Human Resource Services
Employment & Industrial
Relations
Learning & Development
Safety & Wellbeing
Organisational
Development
Payroll

SALISBURY WATER

**MANAGER
Bruce Naumann**

Salisbury Water Business
Unit

**TECHNOLOGY &
DIGITAL SOLUTIONS**

**MANAGER
Acting - Michelle Collins**

Cybersecurity
Network Infrastructure
Application
Implementation,
Management & Support
Service Desk
Business Analysis
IT Hardware Management
& Support
Printing Services
Audio Visual Equipment
Telephony



**CITY DEVELOPMENT
DEPARTMENT**

**GENERAL MANAGER
Michelle English**

**PERSONAL & ADMIN
SUPPORT**
PA to GM - Michelle Whibley

CITY SHAPING

MANAGER
Leandro Lopez Digon

- Economic Development
- Business Advice and Events
- Investment Attraction
- City Plan
- Development Plan Amendments
- Economic and Urban Policy
- Green Industries
- Business Engagement (incl. international)
- Climate Change Adaptation
- Strategic Master Planning

**DEVELOPMENT
SERVICES**

MANAGER
Chris Zafiroopoulos

- Development Plan Assessment
- Building Rules Assessment
- Corporate Signs
- Heritage Assessment
- Dev't Inspections & Compliance
- Assessment of Land Division Proposals
- Dev't Engineering Coordination
- Admin & Support Services
- Private Certification Services

**ENVIRONMENTAL
HEALTH &
COMMUNITY
COMPLIANCE**

MANAGER
John Darzanos

- Public & Environmental Health
- Food Safety
- Inspectorate
- Dog & Cat Management
- Local Government By-Law Enforcement
- Parking Control

**STRATEGIC
DEVELOPMENT
PROJECTS**

MANAGER
Sharee Klein

- Strategic Property Development Projects
- Development Projects Feasibility
- Property Services



**CITY INFRASTRUCTURE
DEPARTMENT**

**GENERAL MANAGER
John Devine**

**PERSONAL & ADMIN
SUPPORT**
PA to GM & Team Leader
City Infrastructure
Administration-
Heather Prasad

FIELD SERVICES

**MANAGER
Mark Purdie**

Road, Drainage, Footpath, Verge & Civil Maintenance
Litter Collection & Graffiti Removal
Signage & Line Marking
Sportsgrounds, Turf and Irrigation Maintenance
Playground, Reserve, Open Space, Wetlands & Biodiversity Maintenance
Feature Landscape & City Centre Maintenance
Pest & Weed Control
Ornamental Lakes Maintenance
Tree Planting & Maintenance
Cemetery Maintenance
Security
Workshop, Fleet & Stores
Building Maintenance
Operational Contract Management

**INFRASTRUCTURE DESIGN &
DELIVERY**

**MANAGER
Jarred Collins**

Civil Design (Roads, Traffic, Drainage, Building & Recreation)
Road Reseal Contract Delivery
Building Project Delivery
Recreation Project Delivery
Capital Works Program
Capital Works Contract Management

**URBAN, RECREATION &
NATURAL ASSETS**

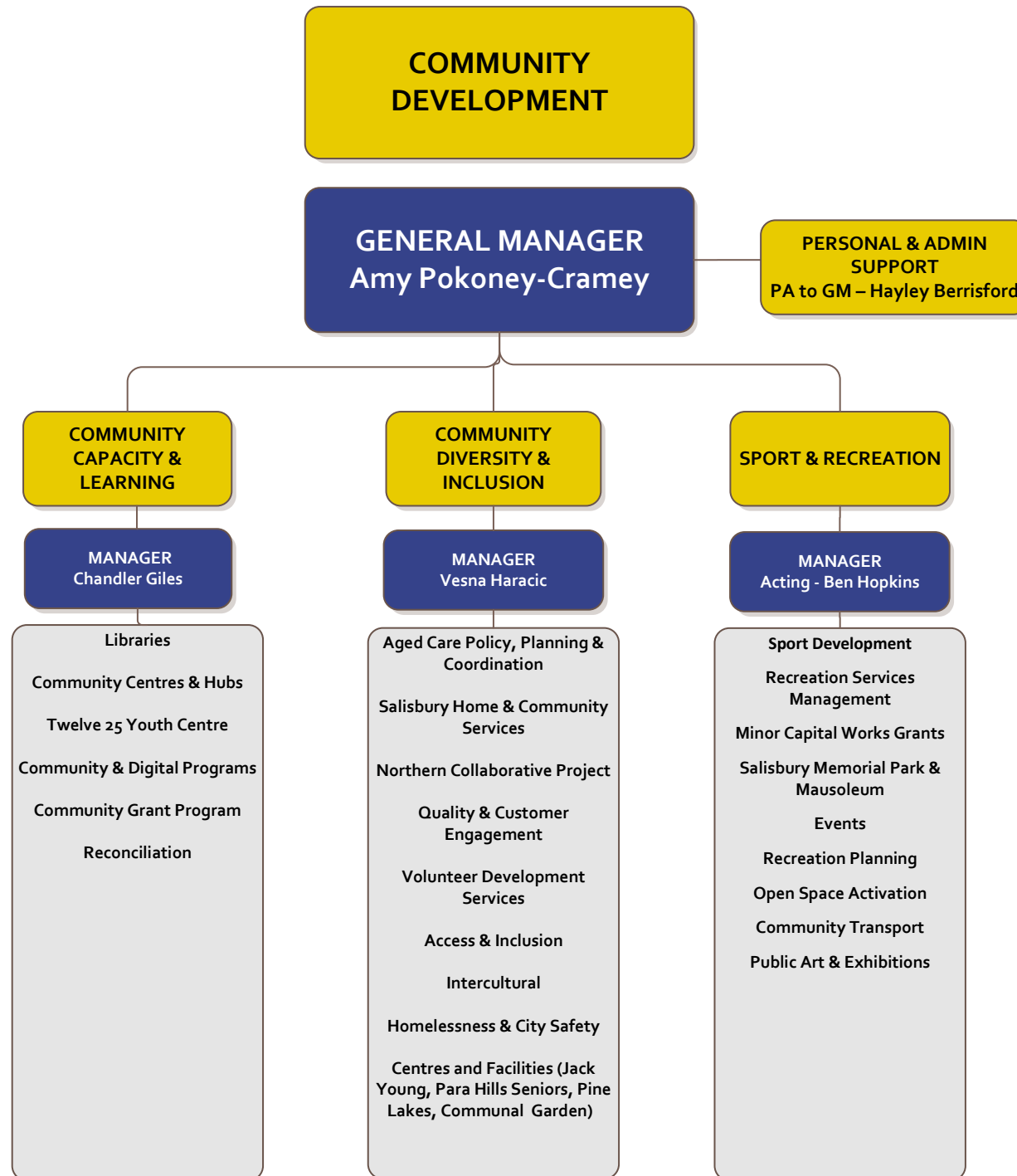
**MANAGER
Jon Foong**

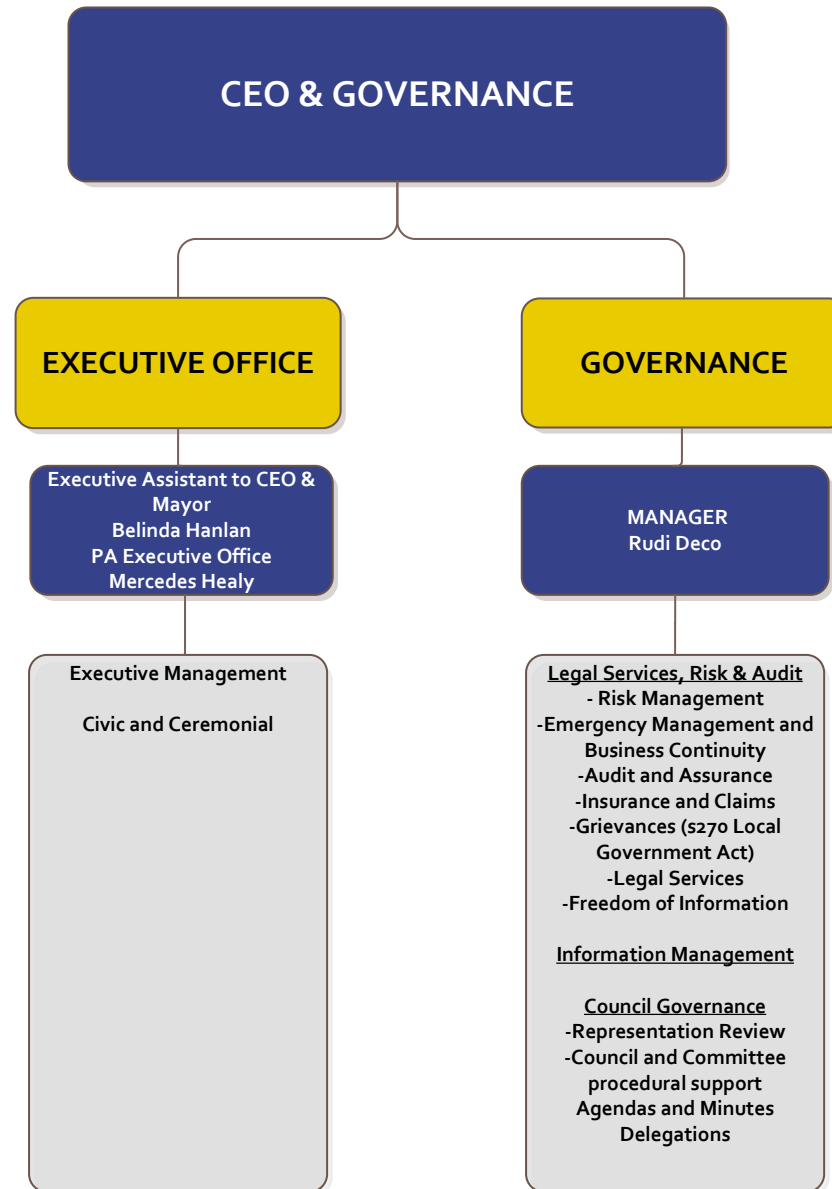
Capital Works Program Development
Asset Management Planning (Open Space, Recreation, Building & Natural Assets)
Street Tree Program Management
Footpath and Pathway Programs
Biodiversity & Environmental Management Programs
Waste Contract Management
Facilities Management
Community and Sports Club Leases

**ENGINEERING ASSETS &
SYSTEMS**

**MANAGER
Chris Haskas**

Strategic Asset Management
Capital Works Program Development
Asset Management Planning (Transport & Civil Engineering Assets)
Infrastructure Planning/ Strategies
Civil Structures
Water Bodies, Drainage & Stormwater Management & Planning
Coastal Structures
Asset Data Management, Analysis & Reporting







Executive Assistant to CEO & Mayor –
Belinda Hanlan
PA Executive Office – Mercedes Healy



CHIEF EXECUTIVE OFFICER
John Harry



GOVERNANCE
Manager: Rudi Deco



BUSINESS EXCELLENCE
Deputy Chief Executive
Officer
Charles Mansueto



CITY DEVELOPMENT
General Manager
Michelle English



CITY INFRASTRUCTURE
General Manager
John Devine



**COMMUNITY
DEVELOPMENT**
General Manager
Amy Pokoney-Cramey



BUSINESS TRANSFORMATION
Director: Jayne Emerson



**PERSONAL & ADMIN
SUPPORT**
PA to GM - Michelle Whibley



**PERSONAL & ADMIN
SUPPORT**
PA to GM & Team Leader City
Infrastructure Administration-
Heather Prasad



**PERSONAL & ADMIN
SUPPORT**
PA to GM – Hayley Berrisford



COMMUNITY EXPERIENCE
Manager: Chelsea Kroepsch



CITY SHAPING
Manager:
Leandro Lopez Digon



FIELD SERVICES
Manager: Mark Purdie



**COMMUNITY CAPACITY &
LEARNING**
Manager: Chandler Giles



FINANCE & PROCUREMENT
Manager: Kate George



DEVELOPMENT SERVICES
Manager: Chris Zafiroopoulos



**INFRASTRUCTURE DESIGN &
DELIVERY**
Manager: Jarred Collins



**COMMUNITY DIVERSITY &
INCLUSION**
Manager: Vesna Haracic



PEOPLE & PERFORMANCE
Manager: Kia Logan



**ENVIRONMENTAL HEALTH &
COMMUNITY COMPLIANCE**
Manager: John Darzanos



**URBAN, RECREATION &
NATURAL ASSETS**
Manager: Jonathan Foong



SPORT & RECREATION
Acting Manager: Ben Hopkins



SALISBURY WATER
Manager: Bruce Naumann



**STRATEGIC DEVELOPMENT
PROJECTS**
Manager: Sharee Klein



**ENGINEERING ASSETS &
SYSTEMS**
Manager: Chris Haskas



**TECHNOLOGY & DIGITAL
SOLUTIONS**
Acting Manager: Michelle Collins