

Non-powerline side



Spotted Gum
Corymbia maculata

An evergreen tree, up to 20m in height, with a spreading canopy. It has smooth, spotted grey bark and clusters of large, white flowers that appear in winter.

This tree is recommended for medium verges.
Local example: Todd Road, Para Hills.

Powerline side



Dwarf Lemon-scented Gum
Corymbia citriodora 'Scentuous'

A small evergreen tree up to 4m in height. It has narrow lemon scented leaves and cream coloured flowers in summer. This tree tolerates a range of soil and climatic conditions and is recommended for small verges and is approved for planting under powerlines.

Tree removal works are being coordinated to occur over Summer 2024/2025 with planting scheduled for Autumn/Winter 2025.

For more information visit

www.salisbury.sa.gov.au/treeprogram

If you have any questions, please contact the project team on 1300 67 65 03 or consultation@salisburytrees.com.au by 5pm Friday 27 September 2024.

Street Tree Renewal Program

Community Information

Cross Keys Road, Cavan



The City of Salisbury will be planting new trees in your street.

Please find enclosed information relating to proposed tree species, trees to be removed, trees to be retained and new plantings.

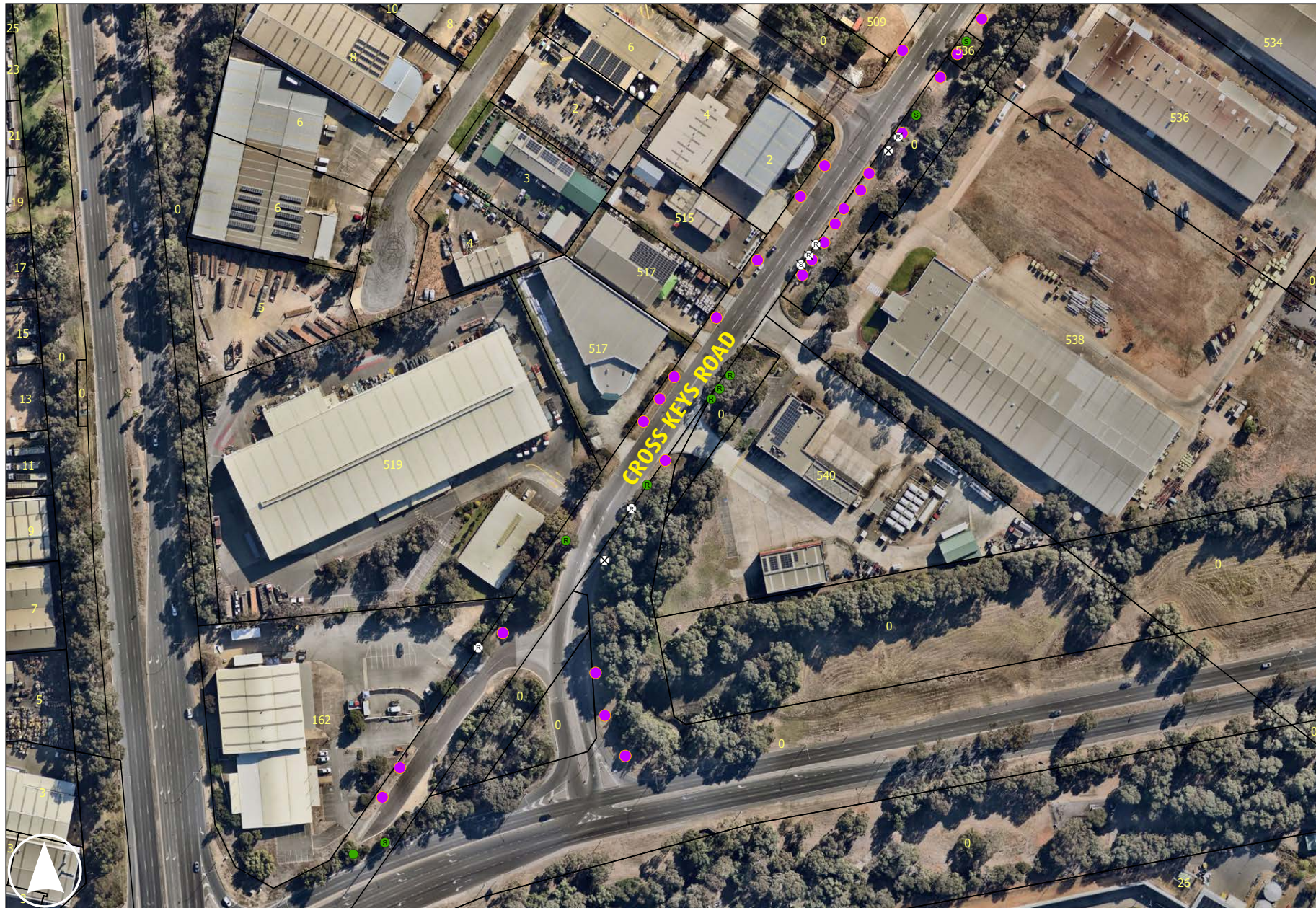


www.salisbury.sa.gov.au/treeprogram

1300 67 65 03

consultation@salisburytrees.com.au

Street Tree Renewal Program **Community Information** Cross Keys Road, Cavan



- Retain
- R Retain Regulated Tree
- S Retain Significant Tree
- ⊗ Remove
- ⊗ R Remove Regulated Tree
- ⊗ S Remove Significant Tree
- New Tree

Please note:
Significant/Regulated trees nominated for removal on the map have not (at time of printing) been approved, and as such are subject to approval.