



# PARK SAFE AT SCHOOL

Read the signs.  
Check for lines.  
Know the rules.

**Park Safe at Schools.**

For more information please visit

[salisbury.sa.gov.au/parksafe](https://salisbury.sa.gov.au/parksafe)



# PARK SAFE AT SCHOOL

## READ THE SIGNS



### No Parking Sign:

No parking zones allow you to stop there for 2 minutes and you must be with your vehicle at all times.



### No Stopping Sign:

This sign means that you cannot stop or park at all in this location. Sometimes No Stopping signs at schools also have a designated time where it is applicable. This means that during the times listed no vehicle can stop in this location, however outside of this time it is allowed.



### Bus Zone Sign:

A bus zone will have signs at either end and you are not allowed to stop or park in this location unless you are driving an approved bus.



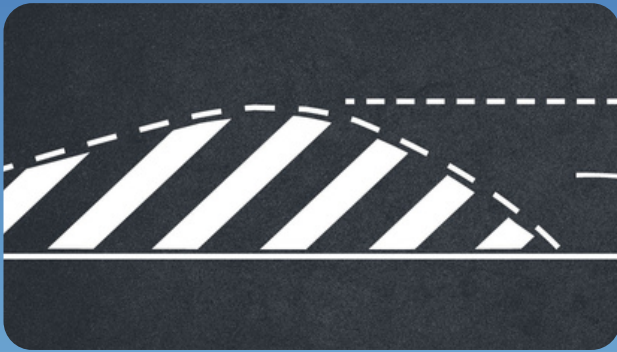
# PARK SAFE AT SCHOOL

## CHECK THE LINES



### **Continuous Yellow Line:**

You cannot stop, park or pick up a passenger at the side of the road that has a continuous yellow line. Yellow lines create a safe clearway, improve line of sight for drivers and help improve traffic flows and reduce traffic congestion.



### **Painted Island:**

You cannot stop or park on a painted island. These are designed to improve traffic flow, allow entry and exits from road ways and parking areas and improve line of sight.



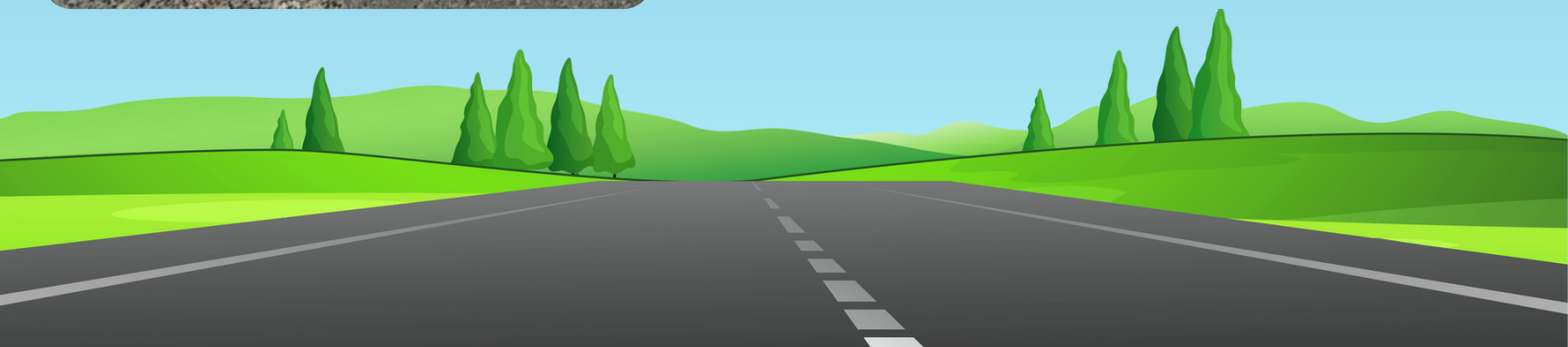
### **Solid white lines:**

You cannot park within 3 meters of a solid white line. Solid white lines in the centre of the road help provide space to prevent vehicles from crossing into the other lane and ensure driver safety near intersections and bends and improve safety at intersections.



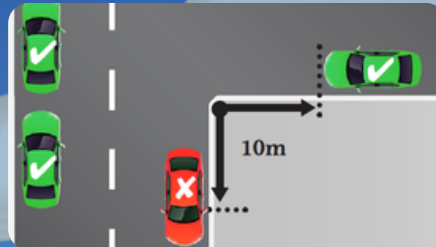
### **Yellow broken lines:**

Yellow broken lines indicate there is a restriction in that area and are accompanied by signs.



# PARK SAFE AT SCHOOL

## KNOW THE RULES



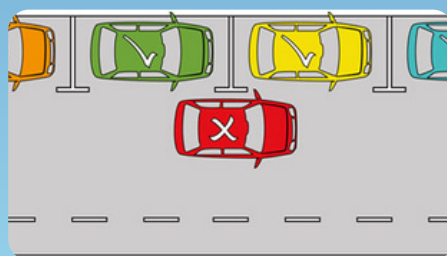
### Parking Too Close to Intersection

You cannot park within 10 metres of an intersection or road junction that does not have traffic lights. This helps prevent obstructions and allows drivers to enter and exit roads safely without crossing on to the other side of the road and helps pedestrians see cars approaching.



### Pedestrian Crossing

You cannot park within 10 metres of a pedestrian crossing. This helps prevent obstructions and allows drivers to clearly see any pedestrians and traffic control devices at the crossing.



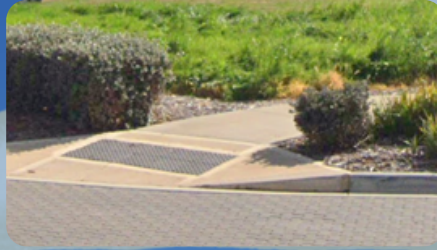
### Double Parking

You cannot stop in traffic next to another vehicle that is already parked near the kerb. This restricts traffic flow and leads to traffic congestion and also blocks the other vehicle from being able to safely exit.



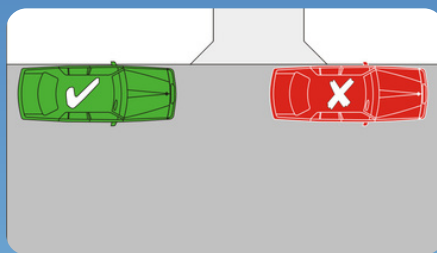
# PARK SAFE AT SCHOOL

## KNOW THE RULES



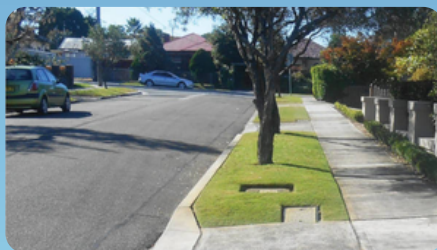
### Footpath Access Ramps

You cannot not park across or in front of pedestrian and footpath access ramps. These are there to assist pedestrian access and allow those with mobility issues and parents with prams to safely use the pathways.



### Blocking Driveway

You cannot park across or obstruct a driveway, as this practice restricts access to and from private property.



### Verge, Nature Strip or Reserve

You cannot park or stop on a verge, nature strip or reserve. These areas are designed for pedestrian use only. Vehicles not only damage these areas but lead to pedestrian safety concerns forcing people onto roads and limiting line of sight for both pedestrians and other road users.



# PARK SAFE AT **SCHOOL**

KNOW THE RULES

**Please remember before you park safe make sure you drive safe**

**Check the speed limits** - School zones have a speed limit of 25 km/h at any time when a child is in the zone.

**Don't queue in traffic** - help reduce congestion and keep moving and if you can't park the first time go around and try again.

**Park and walk** - if parking is limited by your school, help reduce the congestion and queues by parking further away and walking.

